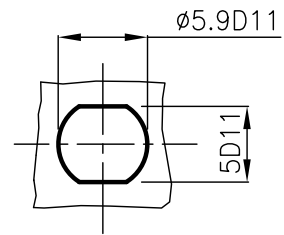
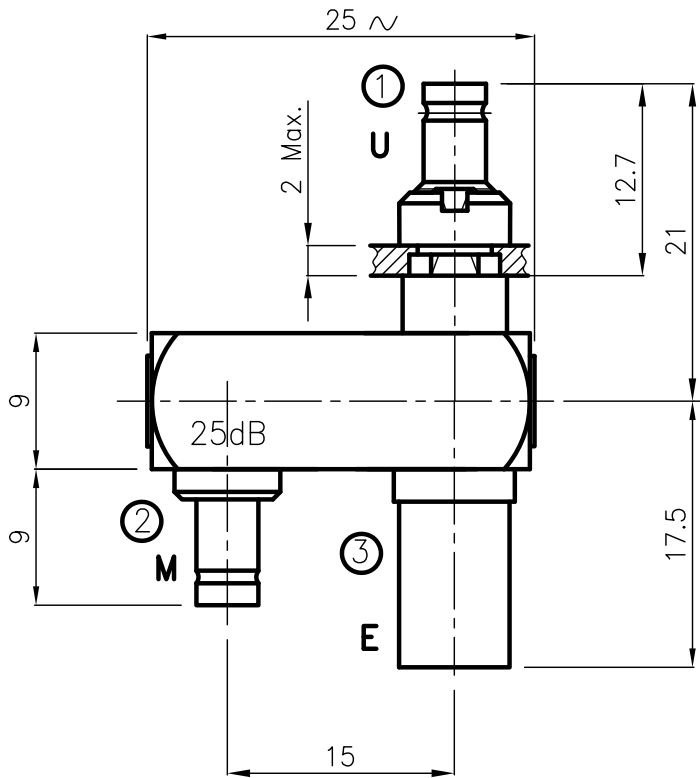
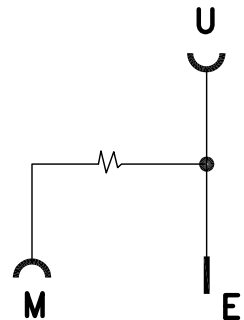


DIST.

A TERMINI DI LEGGE E' VIETATA LA RIPRODUZIONE O LA NOTIFICAZIONE DI QUESTO DISEGNO A TERZI SENZA AUTORIZZAZIONE



PANEL CUTOUT DIMENSIONS



SPECIFICATIONS

Mating and dimensions

as per CECC EN122230

MATING DIMENSIONS AND COUPLING TYPES

- Connector ①
- Connector ②
- Connector ③

- B,C,D
- B,C,D
- B

MATERIALS

- Body
- Male inner contacts
- Female inner contacts
- Insulators

- CW 614 N (UNI EN 12164)
- CW 614 N (UNI EN 12164)
- Beryllium copper
- PTFE (Teflon)

FINISH

- Inner contacts and outer plug contacts
- Contact surfaces of socket bodies
- Other metal parts

- Ni + Au
- Ni + Au
- Ni

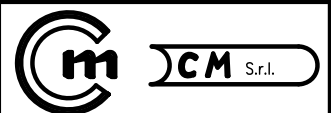
ELECTRICAL

- Impedance
- Frequency range
- Coupler to port M
- Insertions loss main line
- Return loss ports (E) - (U)

- 75 Ohm
- DC ÷ 200 MHz
- 25 dB ± 0.5
- ≤0.6 dB
- ≥25 dB

MOD. 101

			DENOMINAZIONE		
			1.0/2.3 SERIES U-LINK		
			PLUG TO SOCKET WITH SOCKET TEST POINT		
SCALA		1 : 1	CONTR.		DATA
/ ISSUED		05.04.00			05.04.00
REV.	N° MOD.	DATA	FILE	APPROV. A.Q.	DIS.
			BAT0104C		



N° CODICE

BAT.01.004