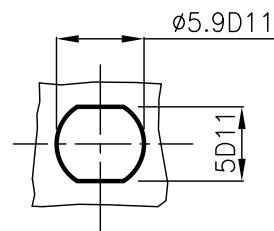
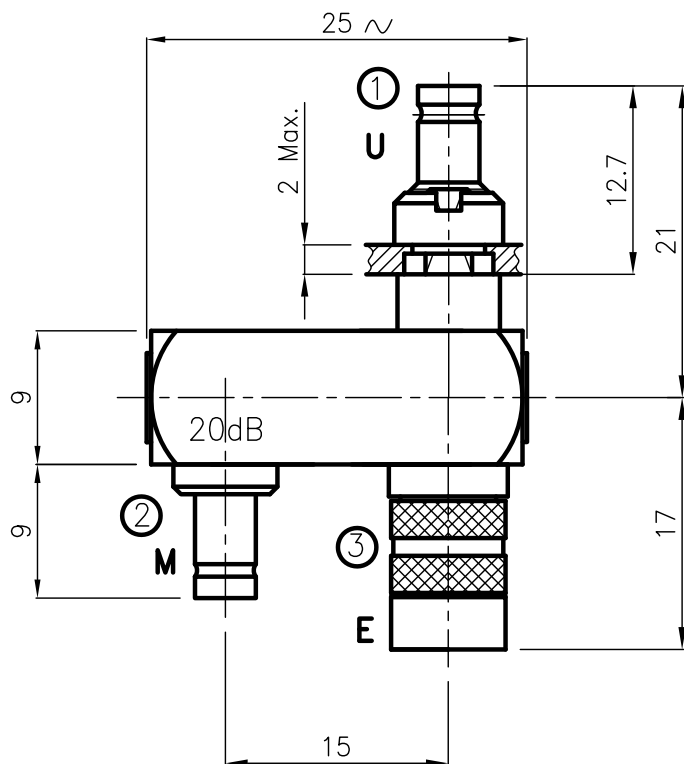
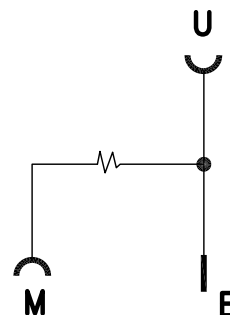


DIST.

A TERMINI DI LEGGE E' VIETATA LA RIPRODUZIONE O LA NOTIFICAZIONE DI QUESTO DISEGNO A TERZI SENZA AUTORIZZAZIONE



PANEL CUTOUT DIMENSIONS



as per CECC EN122230

SPECIFICATIONS

Mating and dimensions

MATING DIMENSIONS AND COUPLING TYPES

- Connector ① Socket B,C,D
- Connector ② Socket B,C,D
- Connector ③ Plug D

MATERIALS

- Body CW 614 N (UNI EN 12164)
- Male inner contacts CW 614 N (UNI EN 12164)
- Female inner contacts Beryllium copper
- Insulators PTFE (Teflon)

FINISH

- Inner contacts and outer plug contacts Ni + Au
- Contact surfaces of socket bodies Ni + Au
- Other metal parts Ni

ELECTRICAL

- Impedance 75 Ohm
- Frequency range DC ÷ 200 MHz
- Coupler to port (M) 20 dB ± 0.2
- Insertions loss main line ≤ 0.5 dB
- Return loss ports (E) - (U) ≥ 20 dB

MOD. 101

			DENOMINAZIONE		
			1.0/2.3 SERIES U-LINK		
			PLUG TO SOCKET WITH SOCKET TEST POINT		
/	ISSUED	24.09.01	SCALA 1 : 1	CONTR.	DATA 24.09.01
REV.	N° MOD.	DATA	FILE BAT0105C	APPROV. A.Q.	DIS. A.R.



N° CODICE
BAT.01.005