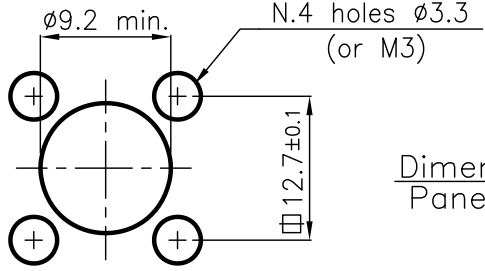
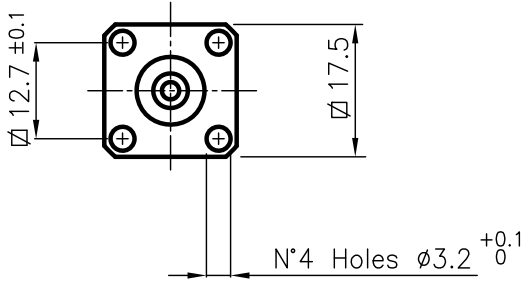
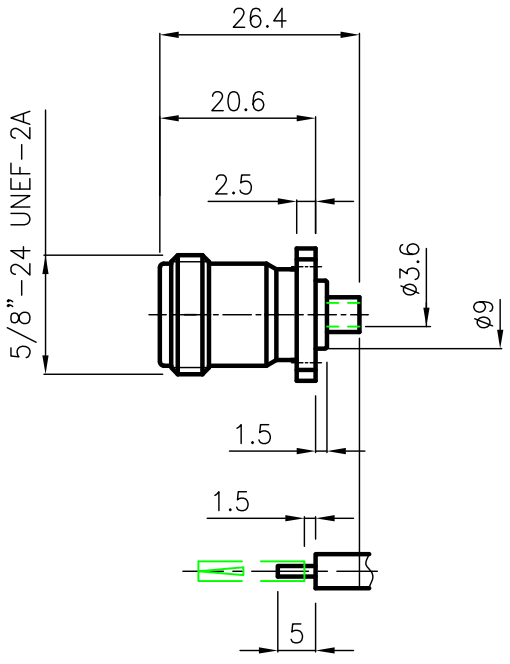


DIST.

A TERMINI DI LEGGE E' VIETATA LA RIPRODUZIONE O LA NOTIFICAZIONE DI QUESTO DISEGNO A TERZI SENZA AUTORIZZAZIONE



Dimensioni foratura pannello  
Panel cutout dimensions

SPECIFICATIONS

Mating and dimensions as per CECC 22210

MATERIALS AND FINISH

Body	CW 614 N (UNI EN 12164 )	White Bronze
Center contact	Beryllium copper	Au
Insulator	PTFE	

FOR CABLE : UT 0.141"

MOD. 101

			DENOMINAZIONE		
			50 Ohm - N SERIES CONNECTOR FIXED PANEL SOCKET -FULL-SOLDER		
SCALA		1:1	CONTR.		DATA
ISSUED		28.03.02	APPROV.		28.03.02
REV.	N° MOD.	DATA	FILE	A.Q.	DIS. A.R.
			NPD6901C		



N° CODICE  
**NPD.69.001**