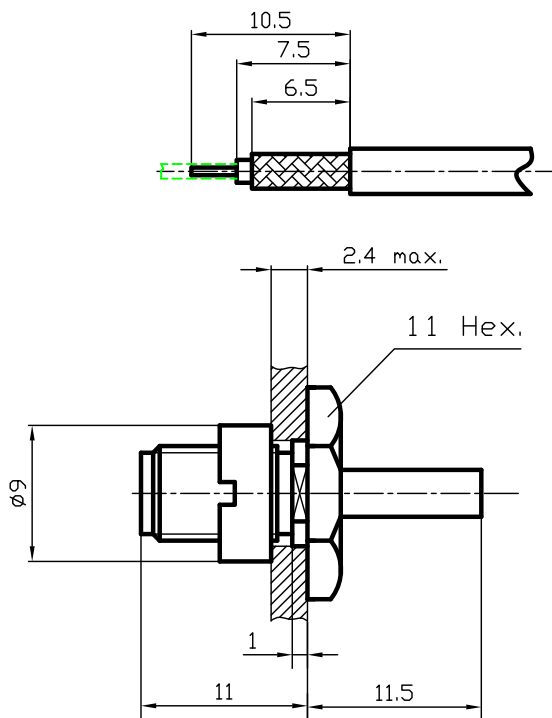


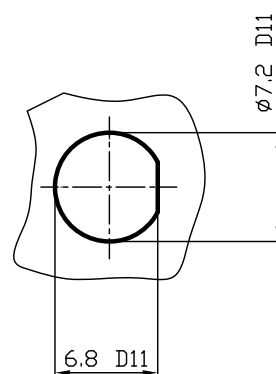
DIST.

A TERMINI DI LEGGE E' VIETATA LA RIPRODUZIONE O LA NOTIFICAZIONE DI QUESTO DISEGNO A TERZI SENZA AUTORIZZAZIONE SCRITTA.

MOD. 101C



PANEL CUTOUT DIMENSION





SPECIFICATIONS

Mating and dimensions as per CECC 22110

MATERIALS AND FINISH

P. N.	SUFFIX	Body and locknut	Socket inner contact
002		Brass, Au	Beryllium copper Au
302		Stainless steel Au	Beryllium copper Au
502		Brass, White Bronze	Beryllium copper Au

Crimping hex 3.2 mm
FOR CABLES RG 316/U

			DENOMINAZIONE				
			50 Ohm - SMA SERIES COAXIAL CONNECTOR				
			BULKHEAD STRAIGHT SOCKET WITH SOLDER				
			TERMINAL				
/	ISSUED	18. 04. 01	SCALA 2: 1	CONTR.	DATA 18. 04. 01	N° CODICE	
REV.	N° MOD.	DATA	FILE DPD5502C	APPROV. A.G.	DIS. T. E.	DPD. 55. XX2	