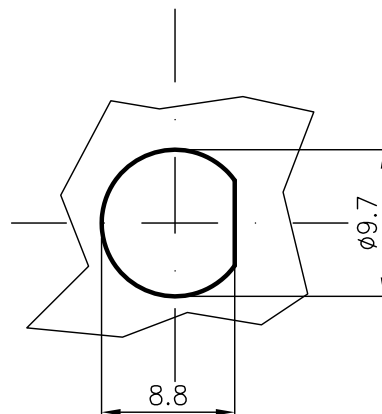
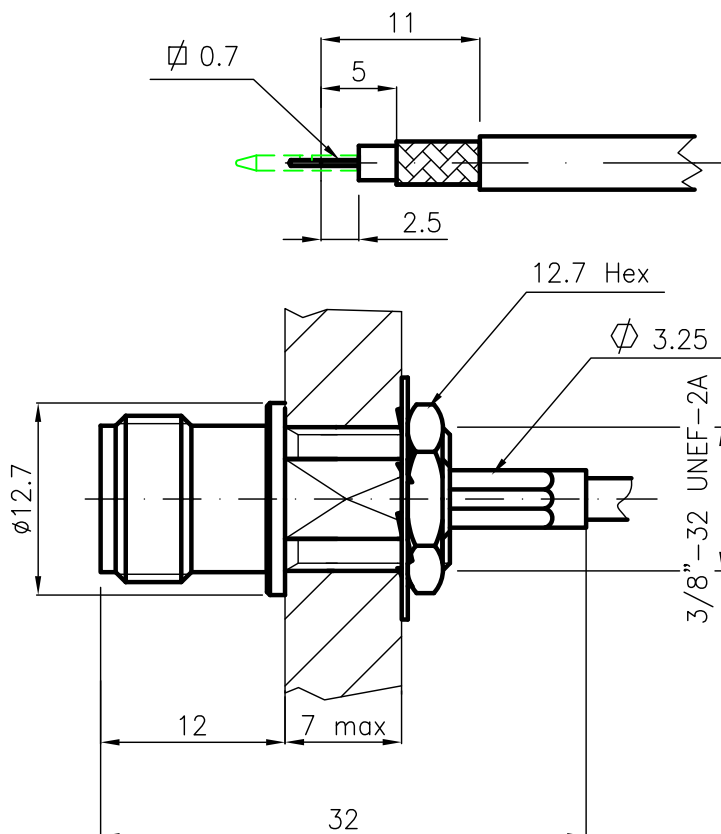


DIST.

A TERMINI DI LEGGE E' VIETATA LA RIPRODUZIONE O LA NOTIFICAZIONE DI QUESTO DISEGNO A TERZI SENZA AUTORIZZAZIONE



PANEL CUTOUT DIMENSIONS

SPECIFICATIONS

Mating and dimensions as per CECC 22220


MATERIALS AND FINISH

Body and locknut	Brass	Ni 3μ min.
Inner contact	Beryllium copper	Au 1.27μ
Insulator	PTFE	
Lockwasher	Bronze	Ni 3μ min.
Crimp ferrule	Soft copper	Ni 3μ min.

FOR CABLES: RG 316/U
 RG 174 A/U
 RG 188 A/U

CRIMPING TOOL CODE : CMC.702/06

MOD. 101

			DENOMINAZIONE			
			50 Ohm-TNC SERIES CONNECTOR BULKHEAD STRAIGHT SOCKET FULL CRIMP			
			SCALA 2:1	CONTR. CUCCHI I.	DATA 03.03.06	N° CODICE HPD.63.001
REV.	N° MOD.	DATA	FILE HPD63001C	APPROV. CUCCHI M.	DIS. ARONICA R.	